

- 1** Tools needed to install the column mount kit.
- a. Wrench 5/16 & 1/2
 - b. Level



Check packaging for damage before opening.

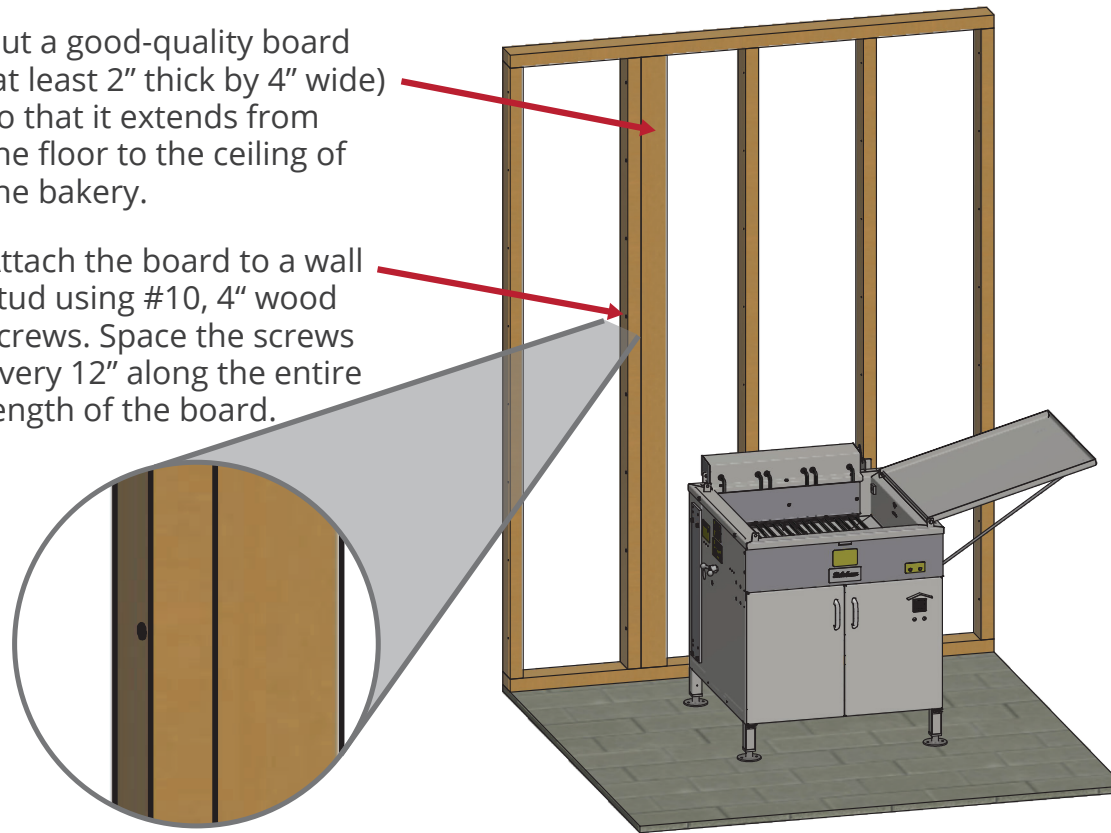
- a. If damage is found contact shipping company.
- b. If no damage is found continue.

Preparing to Mount the Depositor on the Wall

Have a qualified technician provide a solid support on the wall. We cannot guarantee that the Type F Donut Depositor will comply with CE standards unless you have this work done by a qualified technician. (see operators manual for further instructions)

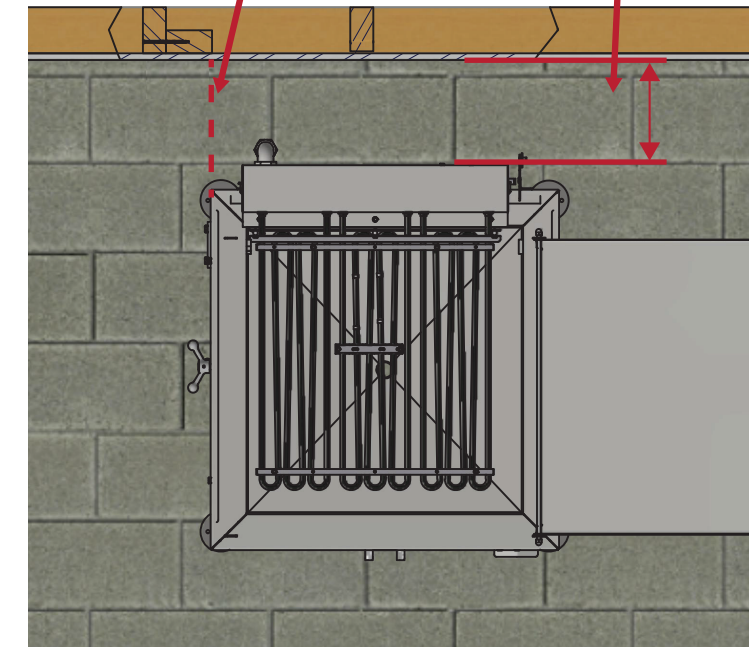
- 2** Cut a good-quality board (at least 2" thick by 4" wide) so that it extends from the floor to the ceiling of the bakery.

- 3** Attach the board to a wall stud using #10, 4" wood screws. Space the screws every 12" along the entire length of the board.

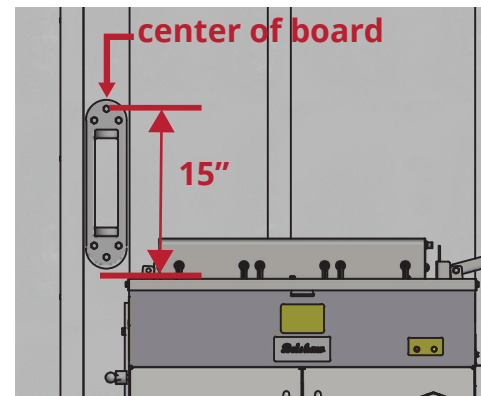


- 4** Align the fryer to the inside edge with the added board.

- 5** Position the fryer 6-8" from wall.



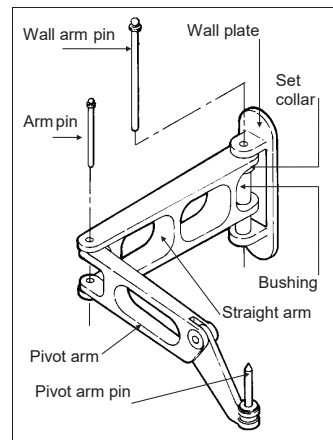
- 6** Lay a straight edge across the top of the fryer kettle so that it touches the wall. With a pencil, mark the wall where the bottom of the straight edge touches. This mark indicates the top of the kettle.



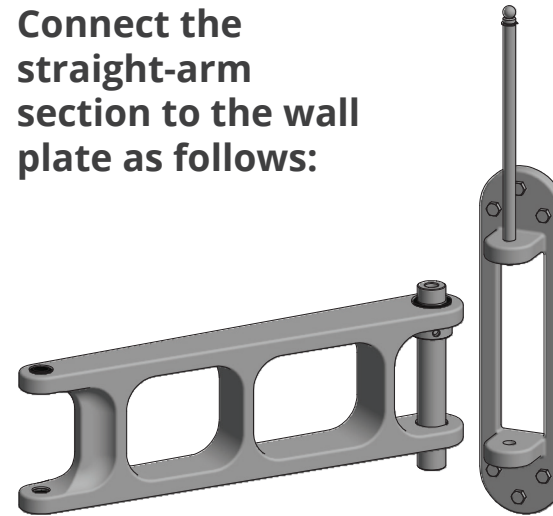
- 7** With a pencil, mark the wall 15" above the kettle height, in the center of the board. Using an appropriate tool, make a 1/4" diameter hole at this point.

- 8** Attach the wall plate to the wall support by screwing a 5/16" x 1-1/2" lag screw (provided) through the top hole of the wall plate.

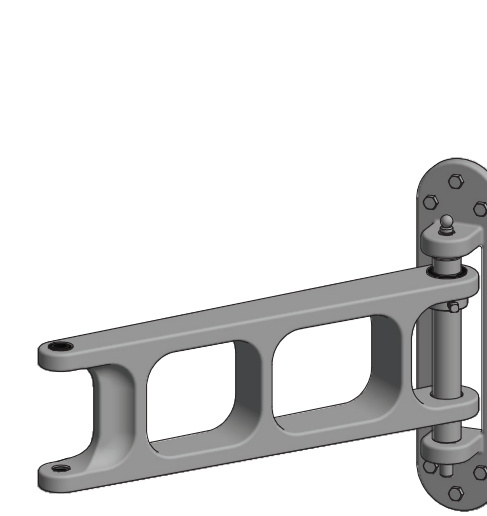
- 9** Use a level to make sure the wall plate is hanging vertically. Screw the five remaining lag screws through the five remaining holes in the wall plate.



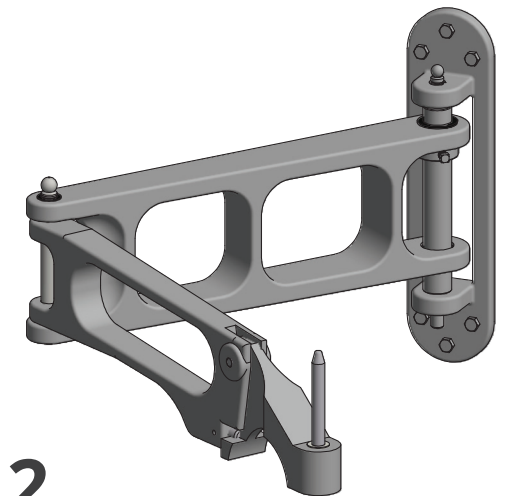
Connect the straight-arm section to the wall plate as follows:



- 10**
- a. Slide the bushing through one leg of the wide end of the straight arm.
 - b. Slide the set collar onto the bushing, with the pin side down.
 - c. Slide the bushing into the other leg of the straight arm.



- 11**
- a. Slide the wall arm pin through the hinge brackets and bushing.



- 12** Connect the pivot arm section to the straight arm as follows:
- a. Put the pivot arm between the legs of the straight arm. The holes in the pivot arm and straight-arm must line up.
 - b. Slide the arm pin through the holes in the straight-arm and pivot arm.